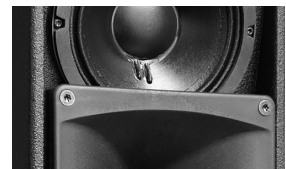




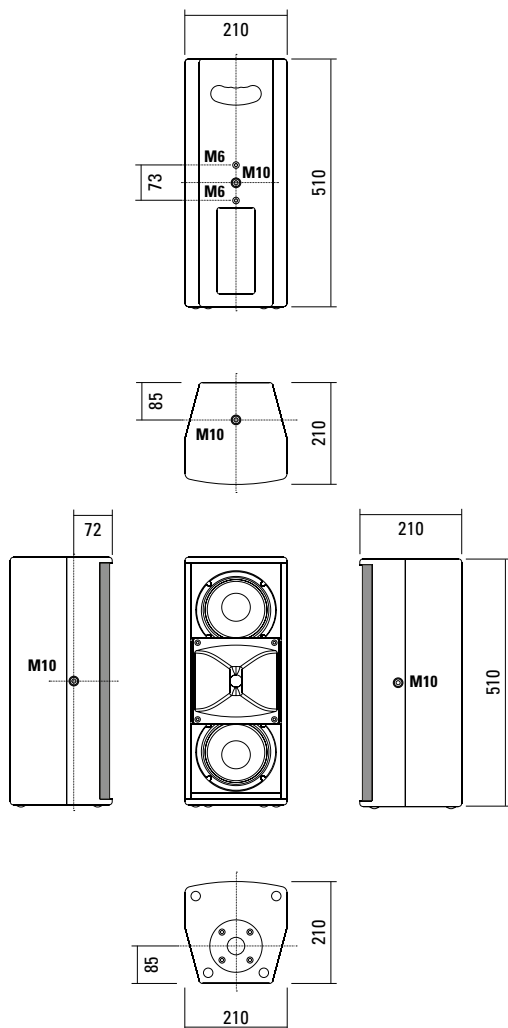
An unobtrusively elegant and yet powerful system for installations and corporate presentations. The revised 2 x 6.5" / 1" configuration with larger horn provides improved coverage and speech intelligibility and longer throw. Four M10 mounting points, combined with our range of mounting accessories, allow fast and simple horizontal or vertical installation. The option is available for a fifth M10 mounting point in place of the standard loudspeaker stand socket. The integrated digital amplifier technology provides 500 / 150 Watt AES and DSP control. A range of factory-configured presets and volume settings can be selected.

PRODUCT SPECIFICATIONS

Speaker Components	2 x 6,5" Nd (2" VC) / 1" (1,7" VC)
Description	HiMid Sound System
Amp Power	LF: 500 W AES / 110-230 V HF: 150 W AES / 110-230 V
Rated Current	0,5 A @ 230 V
SPL <small>Peak @ 1 m</small>	128 dB
Max. Input Signal	25 dBu
DSP	HDLM FPGA Processing 32 bit floating point
AD / DA	24 bit / 96 kHz
Latency	0,8 ms (analog in to analog out)
Usable Range	80 Hz - 19 kHz (-6 dB)
Tuning Frequency <small>excursion minimum</small>	95 Hz
X - Overpoint <small>acoustical</small>	Depends on preset
Coverage <small>horizontal / vertical</small>	90° x 60° - rotatable
Connectors	Neutrik XLR in/out Neutrik PowerCon in/out
Handles	1 x
Rigging / Fittings	4 x M10, 2 x M6 35 mm pole mount
Weight	10,5 kg
Size <small>height x width x depth</small>	51,0 x 21,0 x 21,0 cm
Order No.	00230/dp



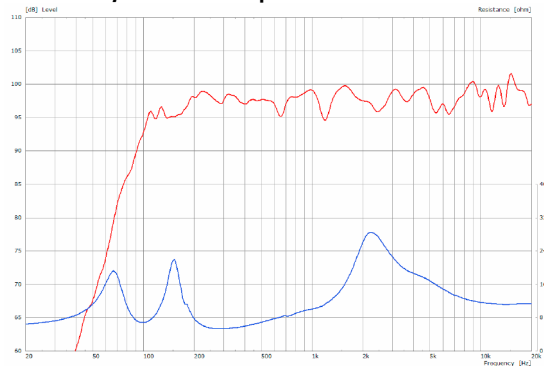
DIMENSIONS



Controller Setups:

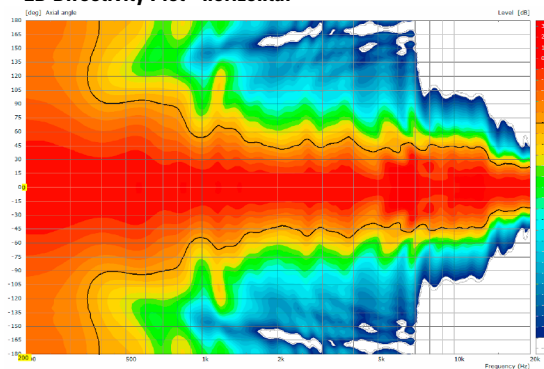
<https://www.seeburg.com/en/downloads>

Sensitivity 1 W @ 1 m + Impedance

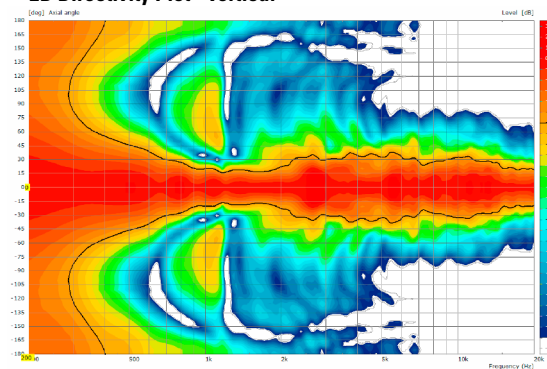


COVERAGE PATTERNS

2D Directivity Plot - horizontal



2D Directivity Plot - vertical



The A 2 dp features integrated digital amplifier electronics with a DSP controller. Various factory-configured presets and volume settings can be selected.

High-grade electronic components from the industrial sector and a first-class circuit design ensure excellent

audio quality with low distortion and a minimal noise floor. Highly efficient and "intelligent" limiter systems ensure optimum protection against overload, without restricting the possibilities offered by this high-performance sound system.

Level

Adjustment in 3 dB steps (-12 dB to +6 dB).

Status

Mute LED

Red light when the system is muted or under technically critical conditions.

Limit LED

Yellow light when the limiter is restricting the level.

Signal LED

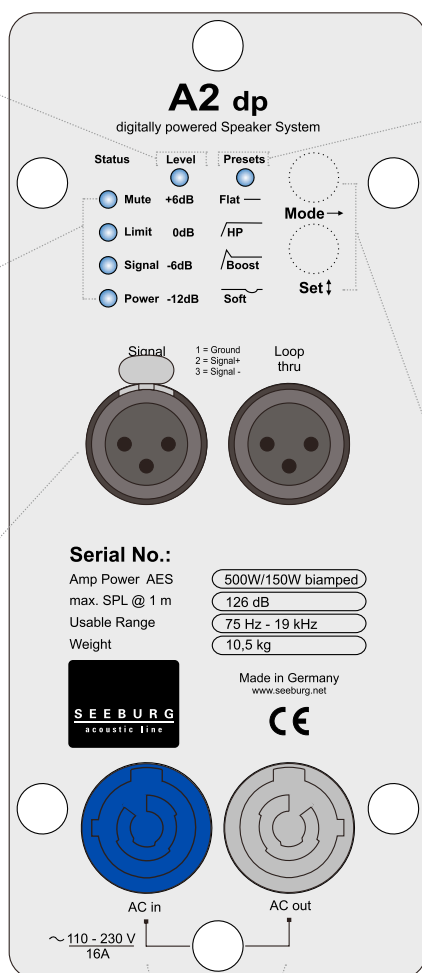
Green light when the input signal exceeds -20 dBu

Power LED

Green light when the system is switched on.

XLR

Symmetrical analog input max. Input +25 dBu. Effective filter protection against HF interference and DC Voltages. Electronically balanced to prevent noise.



Presets

Flat

This setting provides a linear frequency response with a neutral sound characteristics. Standard setting for many applications.

HP

Switches in a high pass filter for use in combination with a subwoofer.

Boost

The same neutral response as the „Flat“ setting, but with the addition of a bass boost.

Soft

Reduces the level in the frequency range from 2.5 - 5 kHz, to which the ear is particularly sensitive. This setting is recommended for high level reproduction of highly compressed music tracks.

Mode - key

Switches between control modes Status, Level and Presets.

Set - key

Setting of various values and Mute on / off.

PowerCon (blue)

Power supply
~110-230 V / 16 A max.

PowerCon (grey)

~110-230 V / 16 A max.
loop through connector

Flying Bracket



for A 2,
horizontal alignment,
incl. (2 x M10 x 20 socket head
screws, 2 x rubber washers, 1 x plate)

Order No. **01214/H/set/w** (RAL 9010)
Order No. **01214/H/set**

Flying Bracket



for A 2,
incl. (black version: 2 x M10 x 20
knurled screws, 2 x rubber washers
white version: 2 x M10 x 20 socket
head screws, 2 x rubber washers)

Order No. **01214/set/w** (RAL 9010)
Order No. **01214/set**

Knurled Screw

M10 x 20 mm

Order No. **73750/w** (RAL 9010)
Order No. **73750**



Rubber Washer

for flying brackets,
5 mm x 40 mm Ø

Order No. **01206**



Plate

for A 2 / A 3 flying brackets,
horizontal alignment,
replacement for pole mount flange,
110 mm Ø flange with M10 nut

Order No. **08119/M10/w** (RAL 9010)
Order No. **08119/M10**



Knurled Head Nut

reduction screw for fastening
M10 Pole Mount Adapter (08126)

Order No. **73755**



Pole Mount Adapter

35 mm Ø → M10 x 16 mm,
M8 x 20 star knob screw

Order No. **08126**



Flange

with ball and socket joint,
with additional locking screw,
M10 x 15, max. load 15 kg

Order No. **08125**



Quick Trigger Clamp

max. load 100 kg

Order No. **01223/100 kg**



Quick Trigger Clamp - small

M10, max. load 20 kg

Order No. **01223/20 kg**



Truss Clamp

incl. M10 Adapter,
max. load 15 kg

Order No. **01221**



Steel Safety

4 mm x 600 mm, black,
max. load 10 kg (BGI 810-3),
quick connector undetachably

Order No. **01376/4**



Ring Screw

M10– DIN 580

Order No. **73700** (zincd)

Order No. **73700/sw** (black zincd)



TV Spigot

10 mm internal thread,
28 mm Ø

Order No. **08128**



ACCESSORIES A 2 dp

Wall Mount



ball and socket joint flange (08125)
+ 08125/plate
Order No. **08125/set**

Wall Mount



for U-brackets, max. load 40 kg,
incl. (M10 x 70 mm socket head screw,
M10 hex lock nut and flat washer)
for 8"-12" speakers
Order No. **08130/F/269/w** (RAL 9010)
Order No. **08130/F/269**

Wall Mount



M10, max. load 15 kg,
for permanent installation,
incl. tilt angle stop
Order No. **08131/F**
Order No. **08131/F/w** (RAL 9010)

Wall Mount



2 x M6 fixing holes (d=73 mm),
1 x M10 fixing hole (center),
max. load 25 kg
Order No. **03034**

Spacer



for Wall Mount (03034)
polyurea coated
Order No. **03034/spc**

Cover



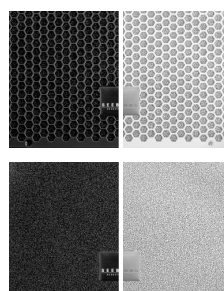
for A 2, padded
Order No. **01243**

Rain Cover



for A 2,
with zipper
Order No. **01243/outdoor**

Honeycomb Grilles



for A 2 front replacement.

Foam behind grille

Order No. **97004/hex/compl**

Order No. **97004/hex/compl/w**
(RAL 9010)

Foam in front of grille

Order No. **97004/compl**

Order No. **97004/compl/w**
(RAL 9010)

Hybrid Cable System



PowerCon-PowerCon / XLR-XLR

2,5 m Order No. **08462**

5 m Order No. **08464**

10 m Order No. **08466**

15 m Order No. **08468**



Spacer -> Wall Mount